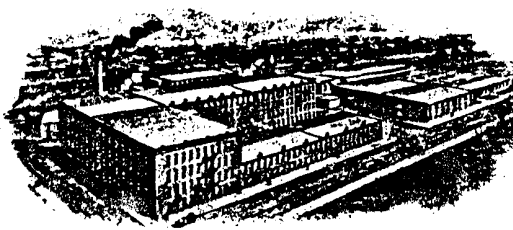


LINDEN AVE. PLANT



FRANKLIN ST. PLANT

ESTABLISHED 1892

YORK BODY CORPORATION

MANUFACTURERS OF

COMMERCIAL BODIES

YORK, PENNA., U.S.A.

Nov. 15, 1929.

4th Asst. Postmaster General,
Post Office Department,
Washington, D. C.

Gentlemen, Attention Mr. Mallaleu.

We are very much disappointed in the slow action that we have gotten in connection with shipping instructions, in fact, every carload that we have shipped thus far, we had to call up over long distance phone in order to get shipping instructions.

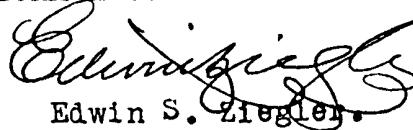
We are now up to the point where we still have instructions for one carload and unless this information reaches us promptly, we will again be at a loss where to ship.

Will you please get after this information for us and have these shipping instructions mailed to us, providing they have not already gone forward.

Thanking you for your co-operation and with kindest personal regards, we remain,

Very truly yours,

YORK-HOOVER BODY CORP.


Edwin S. Ziegler.

ESZ/GF